

Topless Tower Crane Luffing Tower Crane





Company Profile



China National Building Materials (Group) Corporation (CNBM), established in 1984, now is one of the largest state-owned group corporation in China, dealing with building materials & industrial equipment. Up to year 2009, CNBM Group's total asset is 13.5 billion USD and total staff is 80,000.

CNBM International Corporation, specializes in designing & manufacturing of various kinds of construction machinery, including tower crane, building hoist, etc. All the equipment produced by CNBM are compliant with the National level quality standard, and wins great reputation for their enduring performance in worldwide markets.

Key reason for CNBM's achievements:

• Research and Development (R&D)

- Our own systems of production engineering.
- Production design from the concept to the engineering details.
- National level research academy for various building equipment for over 30 years.
- Continuous development of new solutions and products adapted to the requirements of our clients.
- Technical experts with abundant experience in relative fields.

• Production

- Complete quality control system.
- Nearly 20 years experiences in manufacturing fields.
- Full production capacity up to 800 tower cranes annually (with various load from 4tons to 25tons).

• Commercial & marketing

- Customer-oriented philosophy.
- Full international business experiences.
- Global network & localization strategy.
- Professional & high efficiency team.

• Service

Under the guidance of "globalization + localization" strategy, in most of our main markets, the marketing operations & after sales services are carried out by CNBM's local partner companies.

To provide enough & timely support to the local partners, CNBM has set up 6 branches in the world (with more to c, ensuring the best services to the end-users along with high quality equipment.

Our Service Branch

CNBM INTERNATIONAL CORPORATION U.A.E BRANCH

CNBM INTERNATIONAL CORPORATION K.S.A BRANCH

CNBM INTERNATIONAL CORPORATION IRAN BRANCH

CNBM (U.S.A) CORPORATION

CNBM INTERNATIONAL(RUSSIA)CORPORATION

CNBM INDIA CORPORATION

CNBM NIGERIA CORPORATION

CNBM KAZAKHSTAN BRANCH

UNDER CONSTRUCTION OTHER PLACES



Topless Tower crane





CNBM

CNBM International Corporation

Luffing Tower Crane



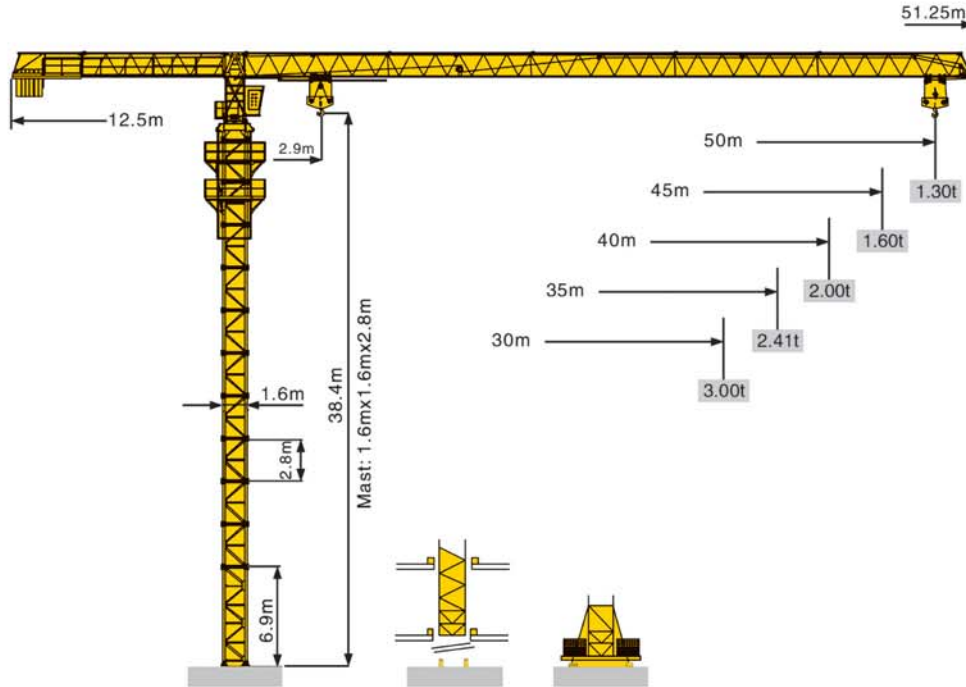


Topless Series 平头系列塔式起重机汇总表

机型 Model	最大起重量(t) Max.Load	端部吊重(t) Tip Load	工作幅度(m) Job Radius	固定式独立高度(m) Free Standing Height	标准节尺寸(m) Mast Section Size
TCP8025	24	2.5	80	73.20	2.5×2.5×6
TCP8030	18	3.0	80	73.20	2.5×2.5×6
TCP7427	18	2.7	74	62.65	2×2×3
TCP6040	12	4.0	60	52.15	2×2×3
TCP6020	10	2.0	60	52.15	2×2×3
TCP5020B/TCP5515B	8	2.0 / 1.5	50 / 55	59.80	2×2×3
TCP5020A/TCP5515A	8	2.0 / 1.5	50 / 55	44.80	1.6×1.6×3
TCP5013	6	1.3	50	44.80	1.6×1.6×3



Topless Tower crane TCP5013- Max Load 6ton



载荷特性表 Load Diagram

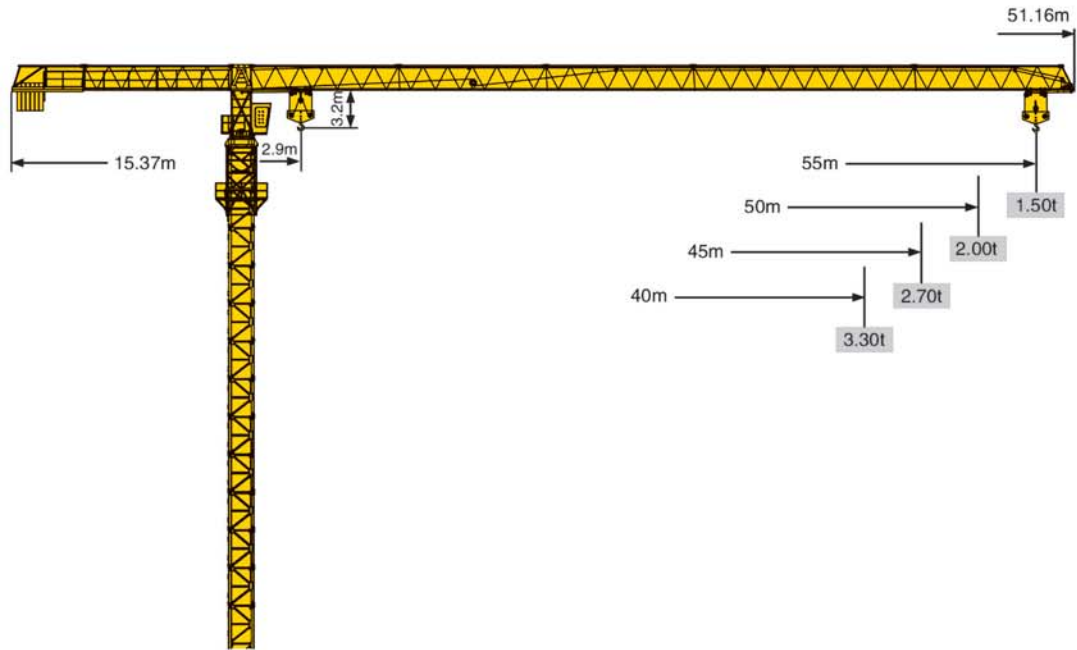
Jib m	倍率 Fall	R(Cmax) m	C(max) t	20	25	30	35	37.5	40	42.5	45	47.5	50
50	IV	15.72	6.00	4.48	3.38	2.66	2.15	1.95	1.78	1.62	1.48	1.36	1.25
	II	27.70	3.00	3.00	3.00	2.70	2.20	2.00	1.82	1.67	1.53	1.41	1.30
45	IV	16.15	6.00	4.63	3.50	2.76	2.24	2.03	1.85	1.69	1.55		
	II	29.16	3.00	3.00	3.00	2.81	2.29	2.08	1.90	1.74	1.60		
40	IV	16.72	6.00	4.83	3.66	2.90	2.35	2.14	1.95				
	II	29.55	3.00	3.00	3.00	2.94	2.40	2.19	2.00				
35	IV	16.75	6.00	4.84	3.67	2.90	2.36						
	II	29.62	3.00	3.00	3.00	2.95	2.41						
30	IV	18.44	6.00	5.45	4.15	3.30							
	II	30.00	3.00	3.00	3.00	3.00							

工作速度 Speed(390v-50Hz)

起升 Hoisting 24Kw		Pmax 3.00-6.00(t)		
	Load(t)	3.00	3.00	1.50
	V(m/min)	9.6	40.0	80.0
	Load(t)	6.00	6.00	3.00
	V(m/min)	4.35	20.0	40.0
容绳量 Drum Capacity		340m		

	变幅 Trolleying	回转 Slewing
Motor	3.3/2.2kw	3.7kw
V	20/40m/min	0.67rpm

Topless Tower crane TCP5020A/5515A-Max Load 8ton



机构特性 Mechanism		⚙️			⚙️			Drum Capacity	Motor	
⬆️⬆️	33PC20	m/min	5.4	30	60	2.7	15	30	450m	24KW
		t	4	4	2	8	8	4		
⬅️➡️	X96	m/min	15-38-58							95Nm
🔄	RCV95	r/min	0-0.7							2X95Nm
📏	RT324	m/min	12.5/25							2X5.2KW
Mains	380V/50Hz			60KVA						

载荷特性表 Load Diagram

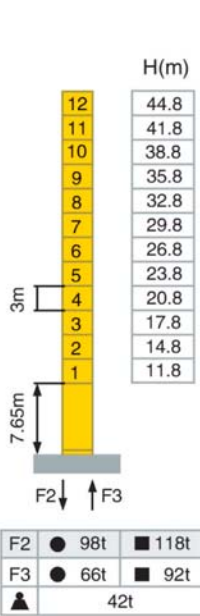
Jib m	倍率 Fall	R(Cmax) m	C(max) t	25	30	35	40	45	50	55
55	IV	13.34	8.00	3.85	3.10	2.65	2.15	1.90	1.60	1.35
	II	25.03	4.00	4.00	3.25	2.8	2.30	2.05	1.75	1.50
50	IV	14.69	8.00	4.36	3.50	3.00	2.47	2.18	1.85	
	II	27.67	4.00	4.00	3.65	3.15	2.62	2.33	2.00	
45	IV	16.51	8.00	5.01	4.05	3.49	2.87	2.55		
	II	31.25	4.00	4.00	4.00	3.64	3.02	2.70		
40	IV	17.80	8.00	5.46	5.46	3.83	3.15			
	II	33.77	4.00	4.00	4.00	3.97	3.30			



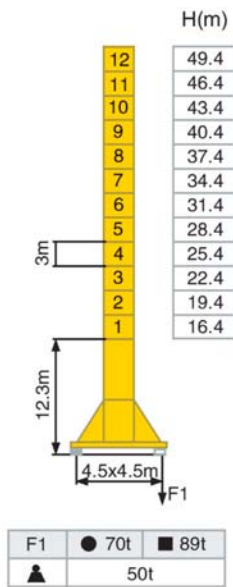
Topless Tower crane TCP5020A/5515A-Max Load 8ton

塔身 Mast 1.6m×1.6m 反力 Reactions

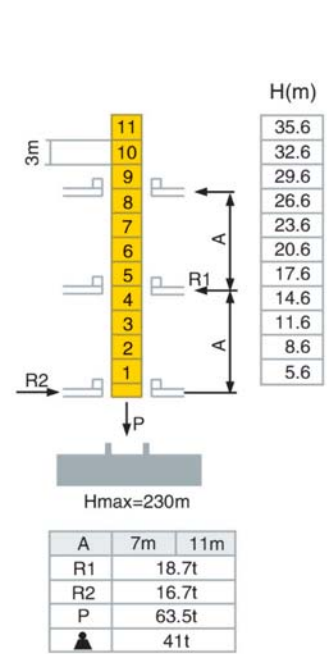
固定式 Stationary



行走式 Travelling

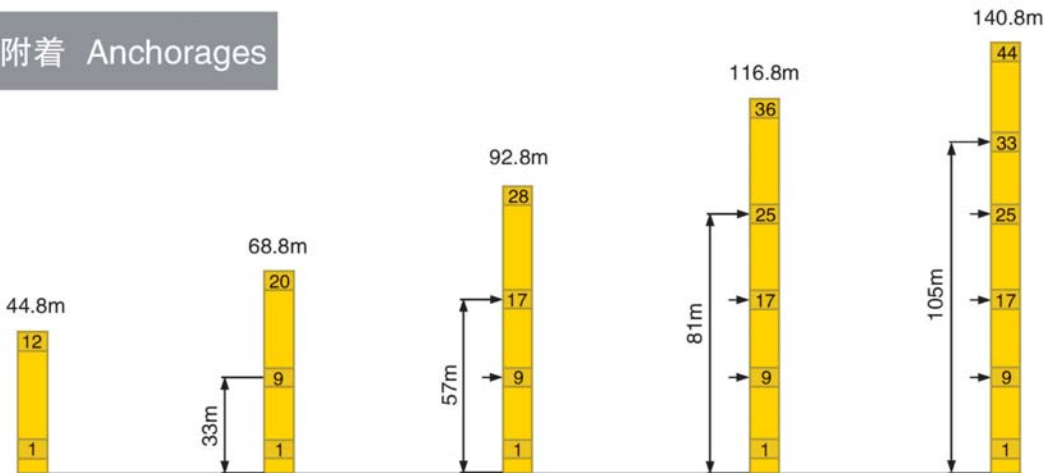


内爬式 Internal Climbing

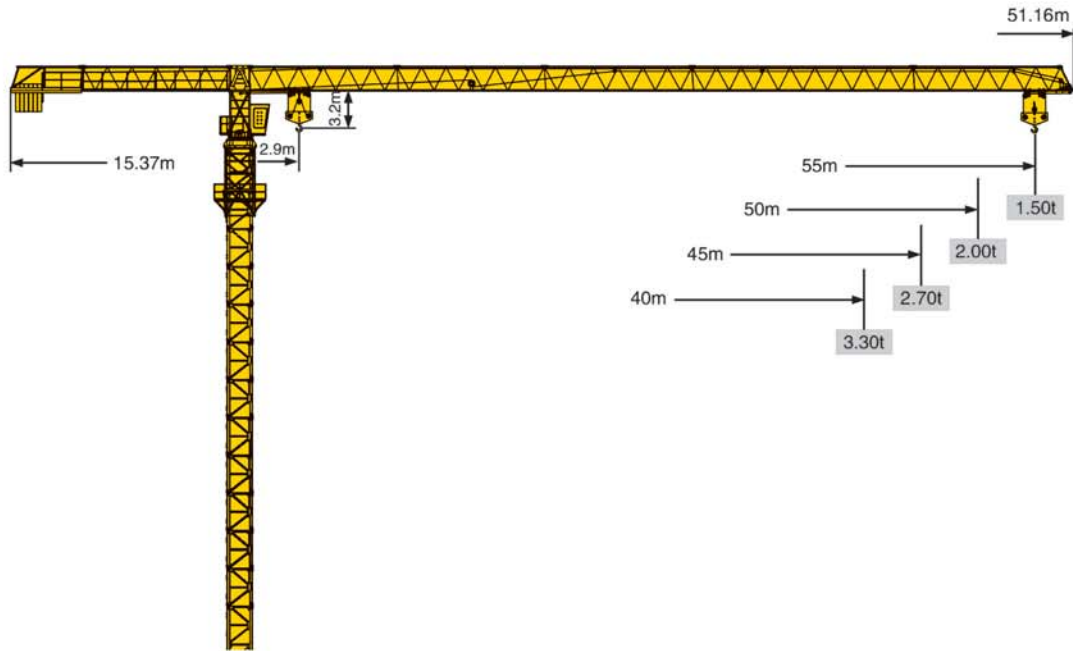


- :工作状态 In service
- :非工作状态 Out of service
- ▲ :无吊载、无配重、最长起重臂和最大高度时的自重
Without load and ballast with longest jib and maximal height

附着 Anchorages



Topless Tower crane TCP5020B/5515B-Max Load 8ton



机构特性 Mechanism		⚙️			⚙️			Drum Capacity	Motor	
⬆️⬆️	33PC20	m/min	5.4	30	60	2.7	15	30	450m	24KW
		t	4	4	2	8	8	4		
⬅️➡️	X96	m/min	15-38-58						95Nm	
🔄	RCV95	r/min	0-0.7						2X95Nm	
⬆️⬆️	RT324	m/min	12.5/25						2X5.2KW	
Mains	380V/50Hz			60KVA						

载荷特性表 Load Diagram

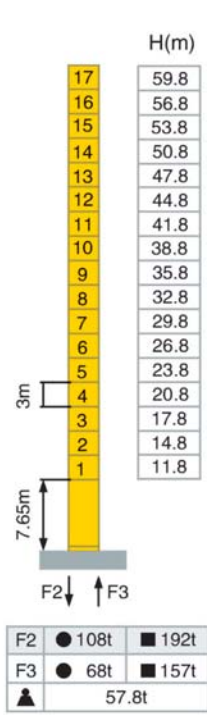
Jib m	倍率 Fall	R(Cmax) m	C(max) t	25	30	35	40	45	50	55
55	IV	13.34	8.00	3.85	3.10	2.65	2.15	1.90	1.60	1.35
	II	25.03	4.00	4.00	3.25	2.80	2.30	2.05	1.75	1.50
50	IV	14.69	8.00	4.36	3.50	3.00	2.47	2.18	1.85	
	II	27.67	4.00		3.65	3.15	2.62	2.33	2.00	
45	IV	16.51	8.00	5.01	4.05	3.49	2.87	2.55		
	II	31.25	4.00	4.00	4.00	3.64	3.02	2.70		
40	IV	17.80	8.00	5.46	5.46	3.83	3.15			
	II	33.77	4.00	4.00	4.00	3.97	3.30			



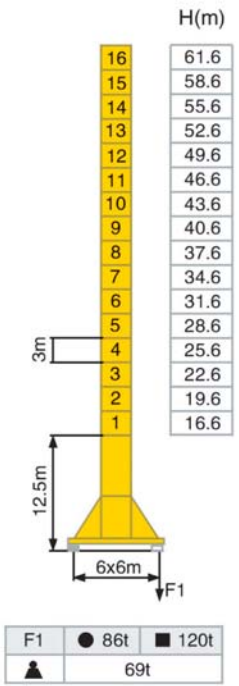
Topless Tower crane TCP5020B/5515B-Max Load 8ton

塔身 Mast 2m×2m 反力 Reactions

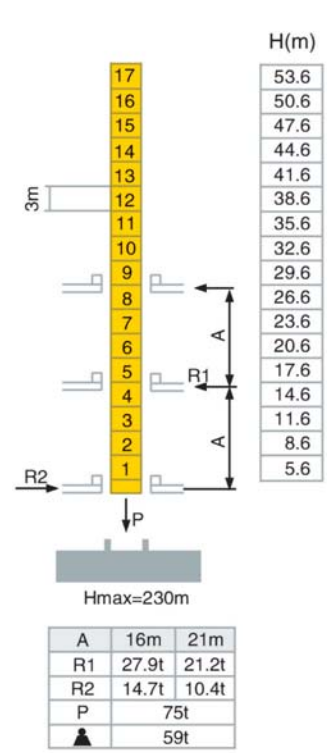
固定式 Stationary



行走式 Travelling

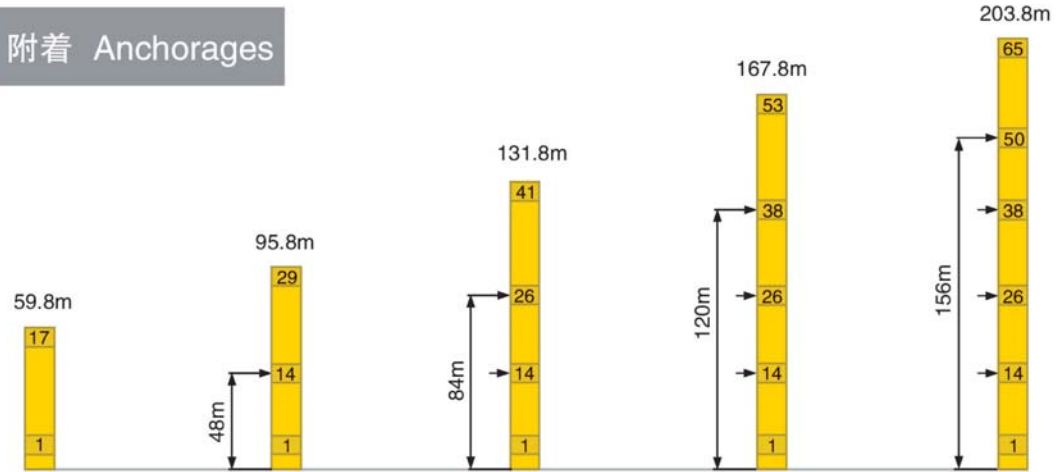


内爬式 Internal Climbing

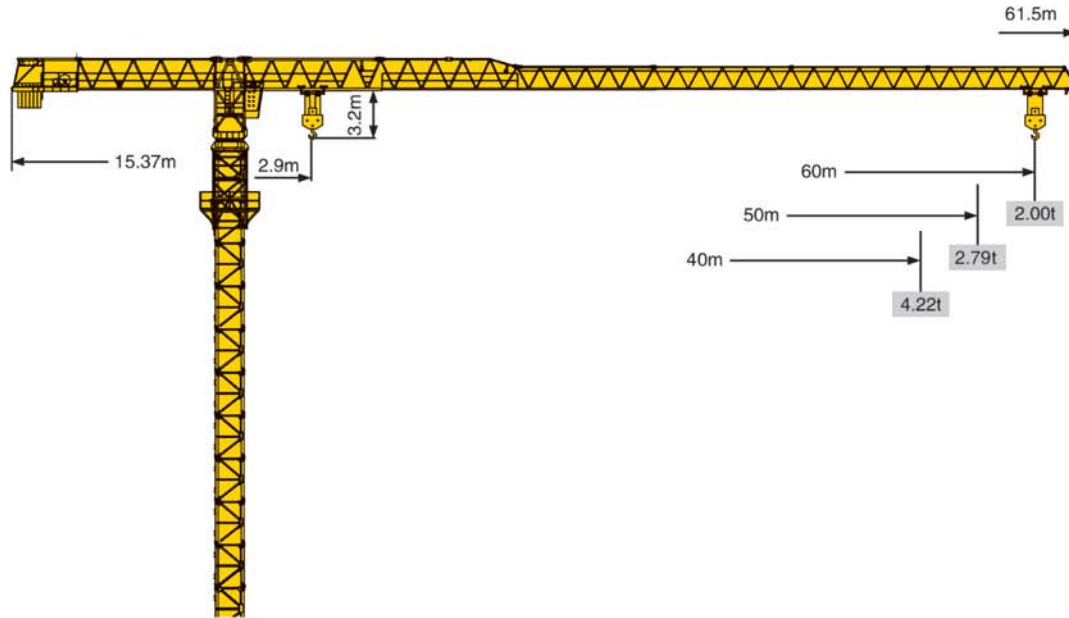


- :工作状态 In service
- :非工作状态 Out of service
- ▲ :无吊载、无配重、最长起重臂和最大高度时的自重
Without load and ballast with longest jib and maximal height

附着 Anchorages



Topless Tower crane TCP6020- Max Load 10ton



机构特性 Mechanism						Drum Capacity	Motor
	70RCS25	m/min	50	100	25	486m	51.5KW
		t	5.00	2.50	10.0		
	X96	m/min	15-38-58				95Nm
	RCV95	r/min	0-0.7				2X95Nm
	RT443	m/min	12.5/25				4X1.7/3.4KW
Mains			380V/50Hz		80KVA		

载荷特性表 Load Diagram

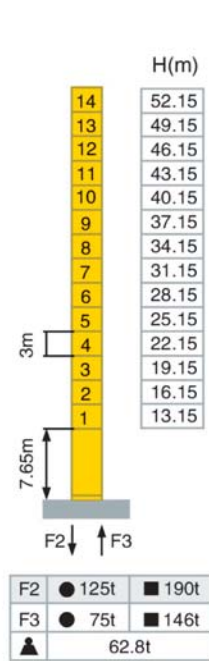
Jib m	倍率 Fall	R(Cmax) m	C(max) t	29.5	33	40	45	50	55	60
60	IV	16.1	10.0	4.89	4.25	3.43	2.85	2.40	2.20	1.89
	II	29.5	5.00	5.00	4.36	3.54	2.96	2.51	2.31	2.00
50	IV	16.1	10.0	4.89	4.53	3.71	3.13	2.68		
	II	29.5	5.00	5.00	4.64	3.82	3.24	2.79		
40	IV	16.1	10.0	4.89	4.53	4.11				
	II	29.5	5.00	5.00	4.64	4.22				



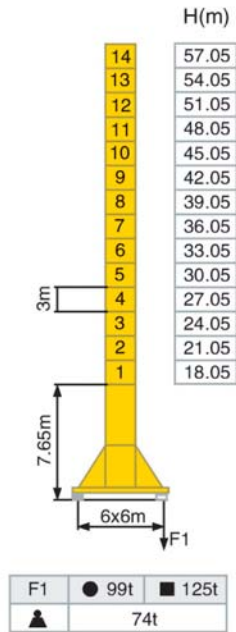
Topless Tower crane TCP6020- Max Load 10ton

塔身 Mast \square 2m \times 2m 反力 Reactions

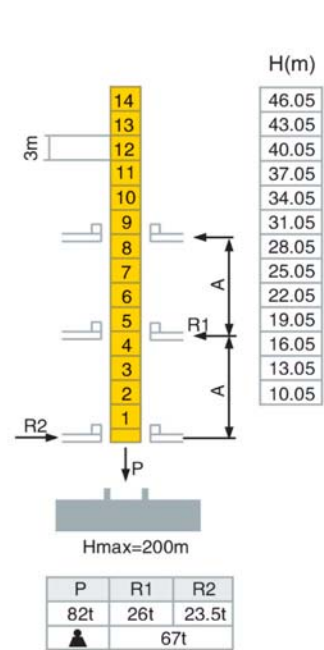
固定式 Stationary



行走式 Travelling

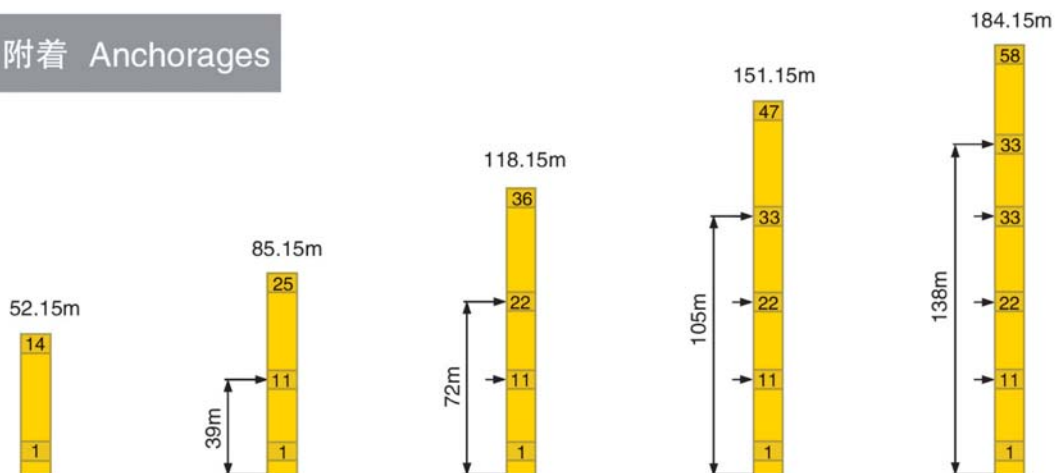


内爬式 Internal Climbing

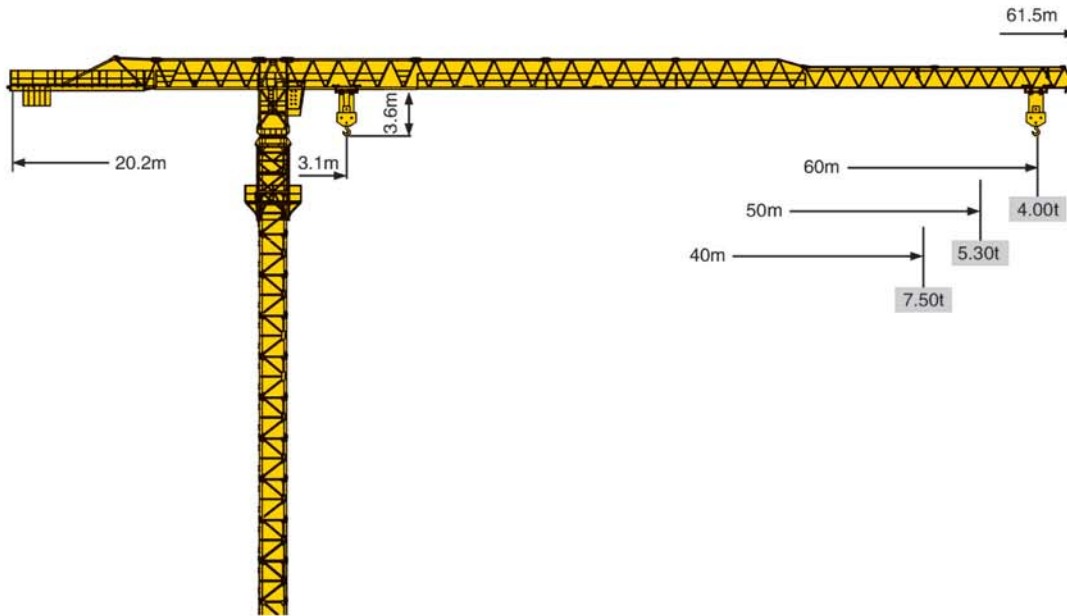


● :工作状态 In service
 ■ :非工作状态 Out of service
 ▲ :无吊载、无配重、最长起重臂和最大高度时的自重
 Without load and ballast with longest jib and maximal height

附着 Anchorages



Topless Tower crane TCP6040- Max Load 12ton



机构特性 Mechanism						Drum Capacity		Motor
⬆️⬆️	70RCS30	m/min	40	80	20	40	550m	51.5KW
		t	6.00	3.00	12.0	6.00		
⬅️➡️	X120	m/min	15-38-58					120Nm
🔄	RCV145	r/min	0-0.7					2X145Nm
📏	RT443	m/min	12.5/25					4X1.7/3.4KW
Mains			380V/50Hz		90KVA			

载荷特性表 Load Diagram

Jib m	倍率 Fall	R(Cmax) m	C(max) t	30	34	40	44	50	54	60
60	IV	22.1	12.0	8.37	7.19	5.84	5.40	4.73	4.32	3.80
	II	42.0	6.00	6.00	6.00	6.00	5.69	4.93	4.52	4.00
50	IV	23.2	12.0	8.88	7.64	6.26	5.62	5.10		
	II	44.8	6.00	6.00	6.00	6.00	6.00	5.30		
40	IV	26.4	12.0	10.3	8.93	7.50				
	II	40.0	6.00	6.00	6.00	6.00				



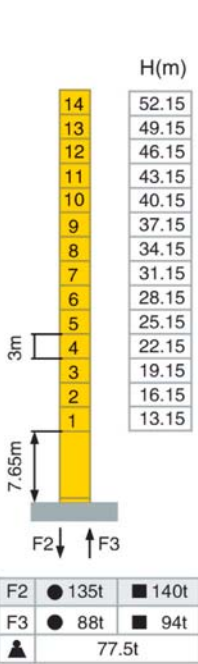
CNBM

CNBM International Corporation

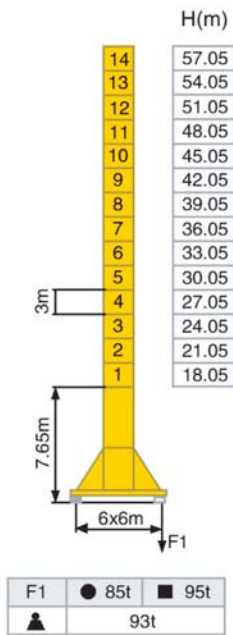
Topless Tower crane TCP6040- Max Load 12ton

塔身 Mast 2m×2m 反力 Reactions

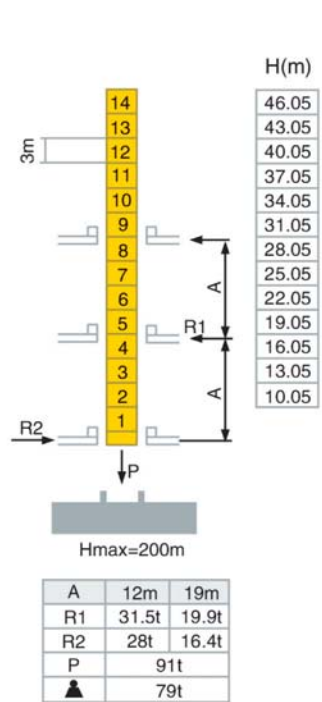
固定式 Stationary



行走式 Travelling

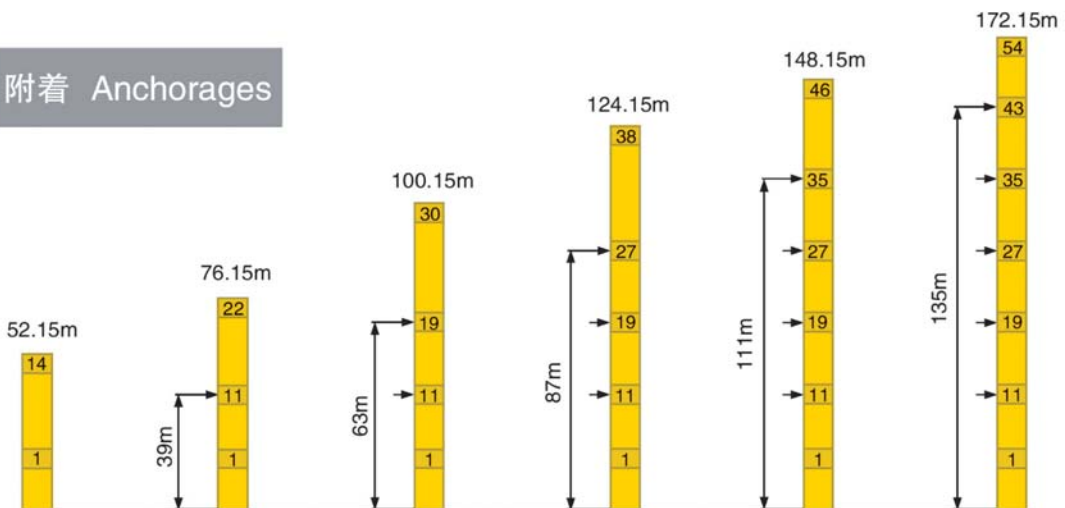


内爬式 Internal Climbing

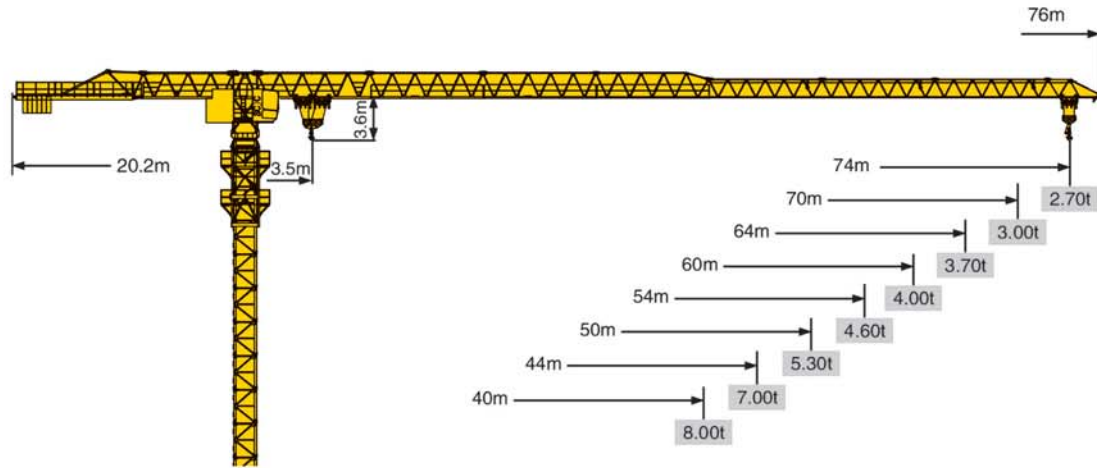


- :工作状态 In service
- :非工作状态 Out of service
- ▲ :无吊载、无配重、最长起重臂和最大高度时的自重
Without load and ballast with longest jib and maximal height

附着 Anchorages



Topless Tower crane TCP7427- Max Load 18ton



机构特性 Mechanism									Drum Capacity	Motor
	100LVF50	m/min	34	58	92	17	29	46	550m	75KW
		t	6.00	6.00	2.50	18.0	12.0	5.00		
	10DVF10	m/min	0-69							7.5KW
	RVF182	r/min	0-0.7							2X9KW
	RT443	m/min	13.5/27							4X1.7/3.4KW
Mains	380V/50Hz			120KVA						

载荷特性表 Load Diagram

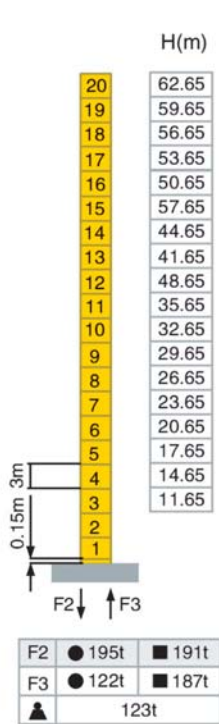
Jib m	倍率 Fall	R(Cmax) m	C(max) t	30	34	40	44	50	54	60	64	70	74
74	IV	14.3	18.0	7.01	6.16	5.05	4.48	3.80	3.43	2.98	2.72	2.39	2.20
	II	25.9	9.00	7.66	6.66	5.55	4.98	4.30	3.93	3.48	3.22	2.89	2.70
70	IV	14.6	18.0	7.42	6.39	5.25	4.66	3.96	3.58	3.11	2.84	2.50	
	II	26.7	9.00	7.92	6.89	5.75	5.16	4.46	4.08	3.61	3.34	3.00	
64	IV	15.7	18.0	8.30	7.08	5.83	5.19	4.42	4.01	3.49	3.20		
	II	29.1	9.00	8.80	7.58	6.33	5.69	4.92	4.51	3.99	3.70		
60	IV	15.7	18.0	8.30	7.36	5.84	5.20	4.43	4.02	3.50			
	II	29.1	9.00	8.80	7.86	6.34	5.70	4.93	4.52	4.00			
54	IV	15.7	18.0	8.40	7.23	5.95	5.30	4.52	4.10				
	II	29.6	9.00	8.90	7.73	6.54	5.80	5.02	4.60				
50	IV	16.3	18.0	8.60	7.64	6.30	5.62	4.80					
	II	31.0	9.00	9.00	8.14	6.80	6.12	5.30					
44	IV	18.2	18.0	10.1	8.75	7.28	6.50						
	II	35.0	9.00	9.00	9.00	7.78	7.00						
40	IV	18.5	18.0	10.3	9.00	7.50							
	II	35.9	9.00	9.00	9.00	8.00							



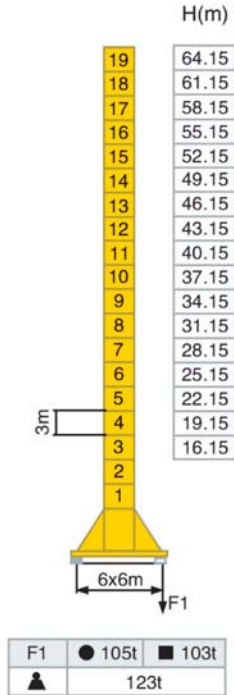
Topless Tower crane TCP7427- Max Load 18ton

塔身 Mast 2m×2m 反力 Reactions

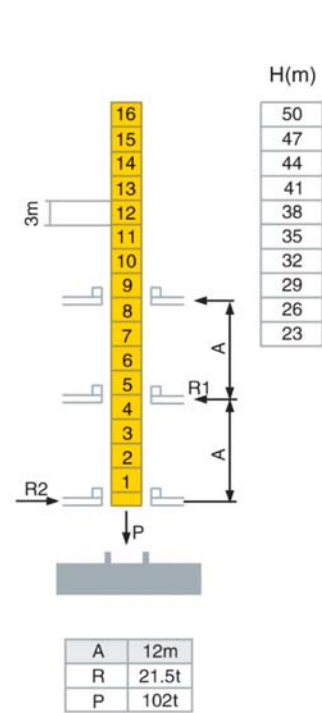
固定式 Stationary



行走式 Travelling

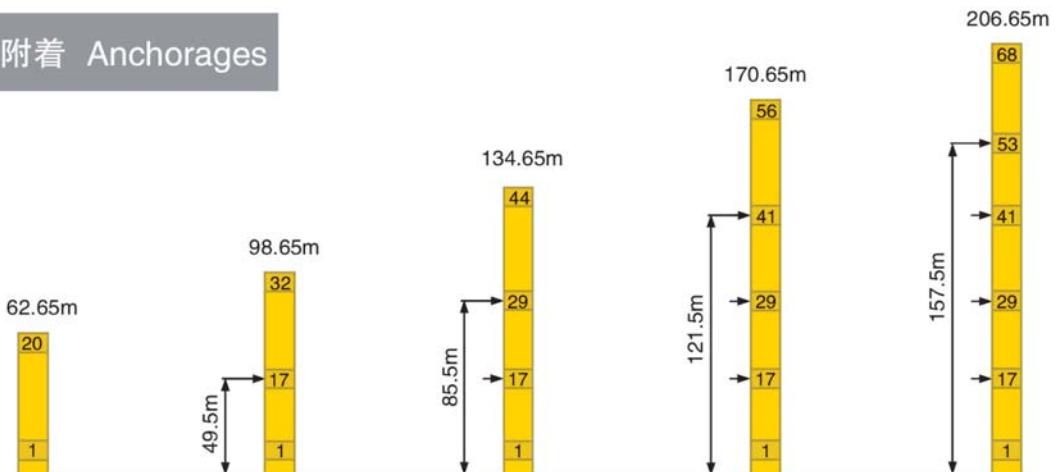


内爬式 Internal Climbing

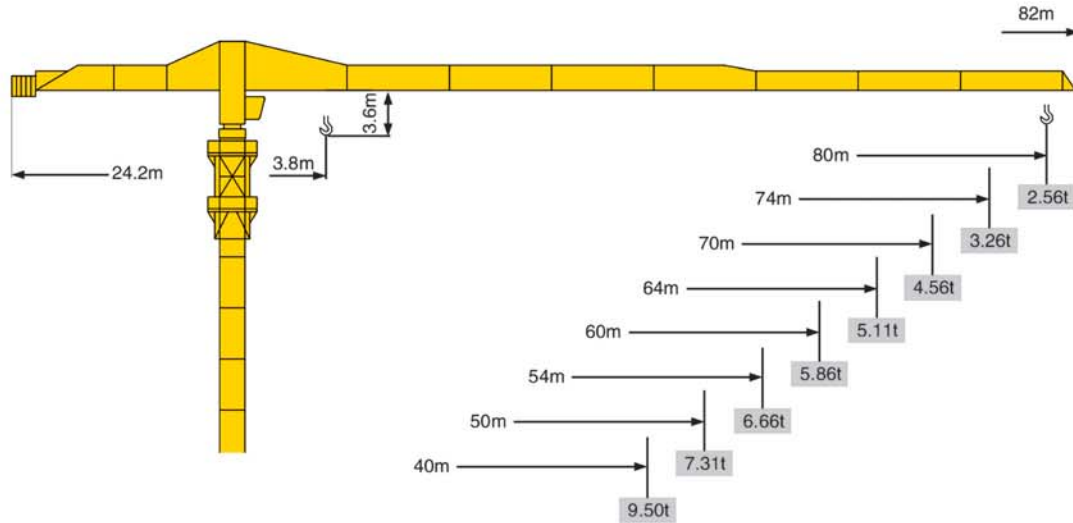


- :工作状态 In service
- :非工作状态 Out of service
- ▲ :无吊载、无配重、最长起重臂和最大高度时的自重
Without load and ballast with longest jib and maximal height

附着 Anchorages



Topless Tower crane TCP8025- Max Load 24ton



机构特性 Mechanism		⚙️			⚙️			Drum Capacity	Motor	
⬆️	120LVF60	m/min	19	38	76	9.5	19	580m	90KW	
		t	12	6	3	24	12			6
⬅️➡️	15DVF10	m/min	0-60							11KW
🔄	RVF183	r/min	0-0.7							3X9KW
📦	37RT	m/min	13.5/27							8X1.7/3.4KW
Mains	380V/50Hz			160KVA						

载荷特性表 Load Diagram

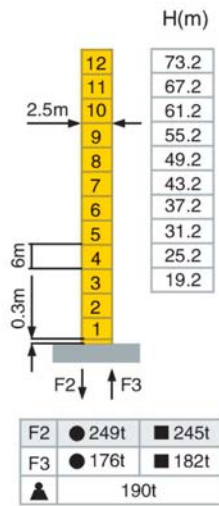
Jib m	倍率 Fall	R(Cmax) m	C(max) t	30	40	44	50	54	60	64	70	74	80
80	IV	12.49	24.0	8.12	5.46	4.74	3.88	3.42	2.84	2.52	2.11	1.87	1.56
	II	23.70	12.0	9.12	6.46	5.74	4.88	4.42	3.84	3.52	3.11	2.87	2.56
74	IV	15.57	24.0	9.09	6.18	5.40	4.46	3.95	3.32	2.97	2.52	2.26	
	II	25.84	12.0	10.09	7.18	6.40	5.46	4.95	4.32	3.97	3.52	3.26	
70	IV	16.30	24.0	11.58	8.02	7.07	5.93	5.31	4.54	4.11	3.56		
	II	31.24	12.0	12.00	9.02	8.07	6.93	6.31	5.54	5.11	4.56		
64	IV	16.30	24.0	11.58	8.02	7.07	5.93	5.31	4.54	4.11			
	II	31.24	12.0	12.00	9.02	8.07	6.93	6.31	5.54	5.11			
60	IV	17.01	24.0	12.22	8.50	7.50	6.31	5.66	4.86				
	II	32.65	12.0	12.00	9.50	8.50	7.31	6.66	5.86				
54	IV	17.01	24.0	12.22	8.50	7.50	6.31	5.66					
	II	32.65	12.0	12.00	9.50	8.50	7.31	6.66					
50	IV	17.01	24.0	12.22	8.50	7.50	6.31						
	II	32.65	12.0	12.00	9.50	8.50	7.31						
40	IV	17.01	24.0	12.22	8.50								
	II	32.65	12.0	12.00	9.50								



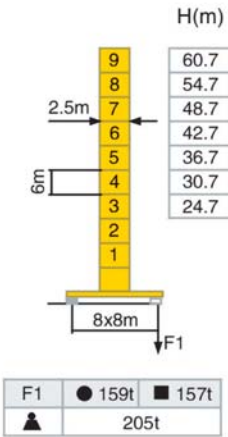
Topless Tower crane TCP8025- Max Load 24ton

塔身 Mast 反力 Reactions

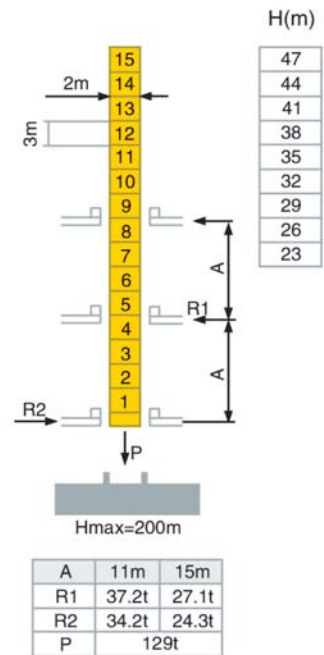
固定式 Stationary



行走式 Travelling

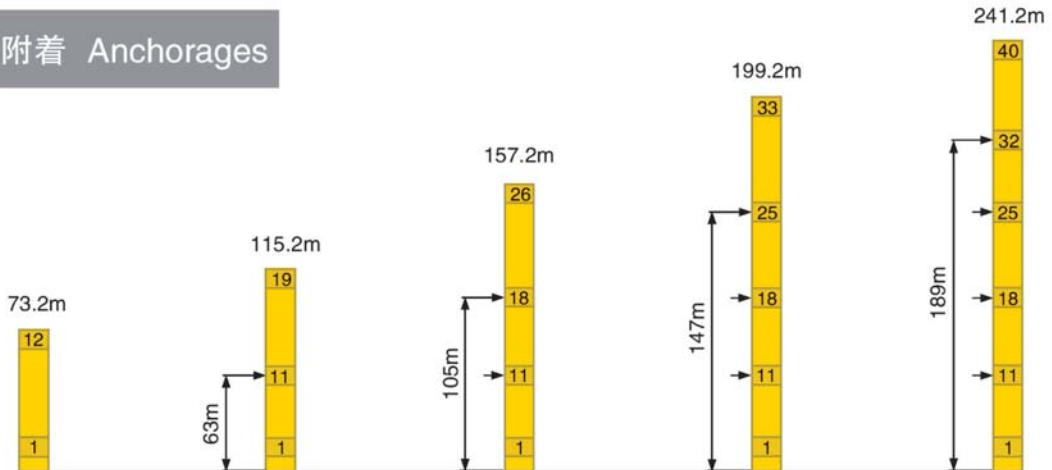


内爬式 Internal Climbing

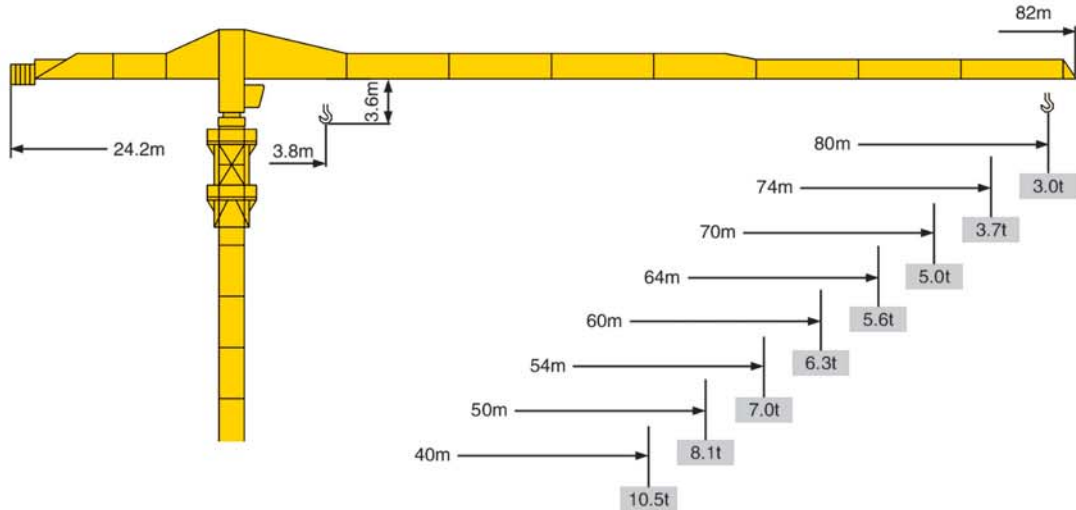


● :工作状态 In service
 ■ :非工作状态 Out of service
 ▲ :无吊载、无配重、最长起重臂和最大高度时的自重
 Without load and ballast with longest jib and maximal height

附着 Anchorages



Topless Tower crane TCP8030- Max Load 18ton



机构特性 Mechanism									Drum Capacity	Motor
⬆️	100LVF50	m/min	34	58	92	17	29	46	550m	75KW
		t	6	6	2.5	18	12	5		
↔️	10DVF10	m/min	0-69							7.5KW
🔄	RVF183	r/min	0-0.7							3X9KW
📏	37RT	m/min	13.5/27							8X1.7/3.4KW
Mains	380V/50Hz			160KVA						

载荷特性表 Load Diagram

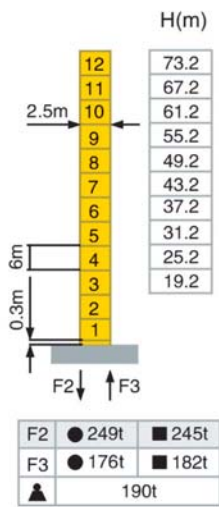
Jib m	倍率 Fall	R(Cmax) m	C(max) t	30	40	44	50	54	60	64	70	74	80
80	IV	16.6	18.0	9.04	6.16	5.49	4.68	4.25	3.71	3.40	3.015	2.79	2.50
	II	30.5	9.0	9.00	6.66	5.99	5.18	4.75	4.21	3.90	3.51	3.29	3.00
74	IV	18.0	18.0	10.0	6.92	6.17	5.29	4.81	4.21	3.87	3.44	3.20	
	II	33.6	9.0	9.00	7.42	6.67	5.79	5.31	4.71	4.37	3.94	3.70	
70	IV	21.7	18.0	12.44	8.88	8.86	6.77	6.18	5.44	5.03	4.50		
	II	41.2	9.0	9.0	9.00	9.36	7.27	6.68	5.94	5.53	5.00		
64	IV	21.8	18.0	12.5	8.97	7.97	6.86	6.26	5.52	5.10			
	II	41.6	9.0	9.0	9.00	8.47	7.36	6.76	6.02	5.60			
60	IV	22.5	18.0	13.0	9.35	8.35	7.20	6.57	5.80				
	II	43.3	9.0	9.00	9.00	8.85	7.70	7.07	6.30				
54	IV	22.2	18.0	12.8	9.18	8.25	7.11	6.50					
	II	42.9	9.0	9.00	9.00	8.75	7.61	7.00					
50	IV	23.3	18.0	13.6	9.72	8.77	7.60						
	II	45.4	9.0	9.00	9.00	9.00	8.10						
40	IV	24.5	18.0	14.3	10.5								
	II	40.0	9.0	9.00	9.00								



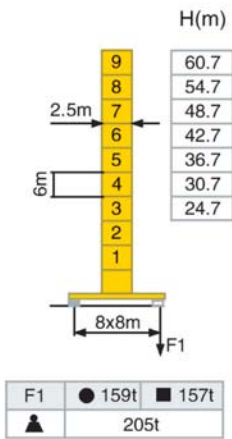
Topless Tower crane TCP8030- Max Load 18ton

塔身 Mast 反力 Reactions

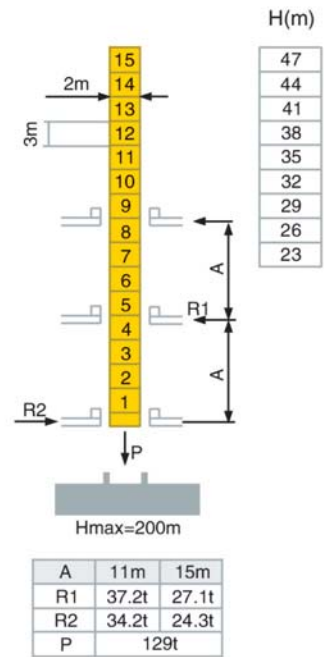
固定式 Stationary



行走式 Travelling

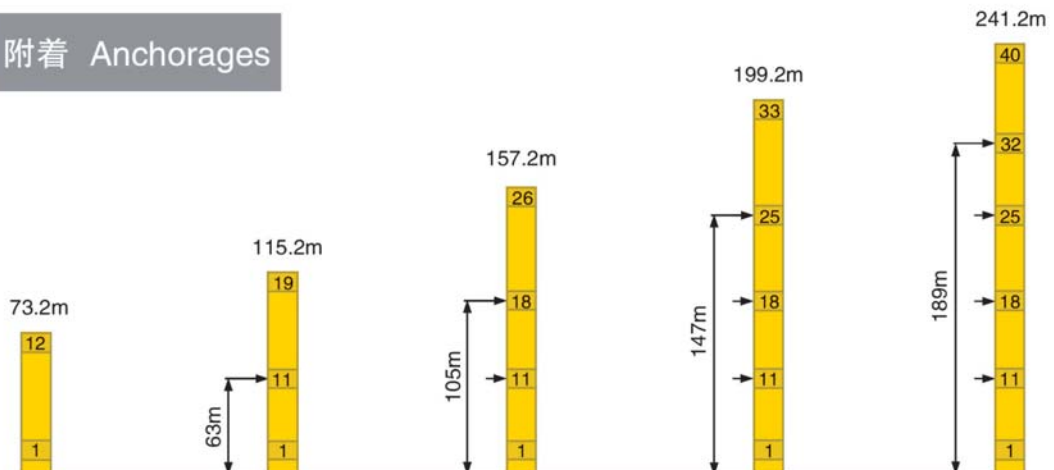


内爬式 Internal Climbing

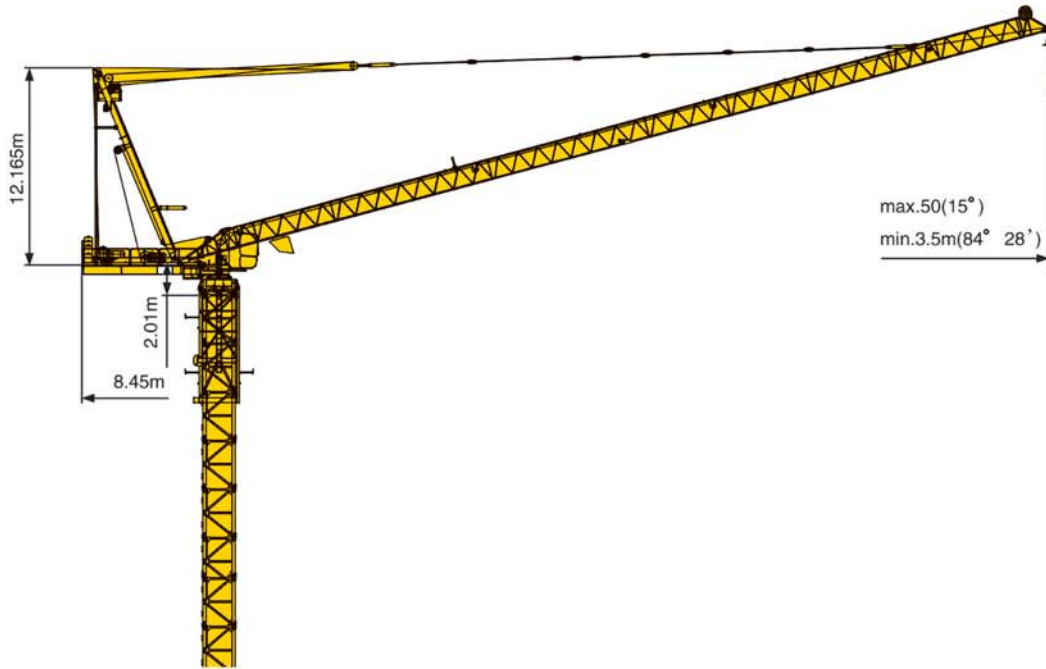


- :工作状态 In service
- :非工作状态 Out of service
- ▲ :无吊载、无配重、最长起重臂和最大高度时的自重 Without load and ballast with longest jib and maximal height

附着 Anchorages



luffing Tower crane TCD160-Max Load 10ton



载荷特性表 Load Diagram

Jib m	倍率 Fall	R(Cmax) m	C(max) t	20	25	30	35	40	45	50
50	IV	20.0	10.0	10.0	7.50	6.00	4.90	4.10	3.50	3.00
	II	35.0	5.00	5.00	5.00	5.00	5.00	4.30	3.70	3.20
45	IV	20.0	10.0	10.0	7.70	6.20	5.10	4.20	3.60	
	II	35.0	5.00	5.00	5.00	5.00	5.00	4.40	3.80	
40	IV	20.0	10.0	10.0	7.80	6.20	5.10	4.30		
	II	37.0	5.00	5.00	5.00	5.00	5.00	4.50		
35	IV	20.0	10.0	10.0	8.00	6.40	5.30			
	II	35.0	5.00	5.00	5.00	5.00	5.00			
30	IV	20.0	10.0	10.0	8.10	6.50				
	II	30.0	5.00	5.00	5.00	5.00				

工作速度 Speed(380v-50Hz)

起升 Hoisting 51.5Kw			
Pmax		5.00-10.00(t)	
	Load(t)	5.00	2.5
	V(m/min)	50	100
	Load(t)	10	5.0
	V(m/min)	25	50
容绳量 Drum Capacity		550m	

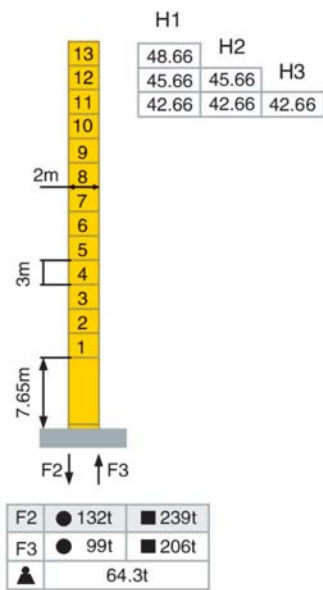
	拉臂 Luffing	回转 Slewing
Motor	30Kw	2X9Kw
V	≤3min	0.7rpm



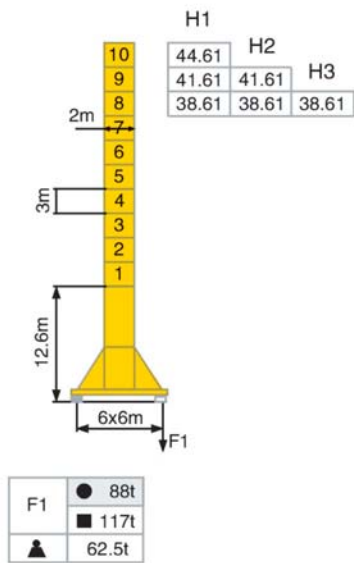
Luffing Tower crane TCD160-Max Load 10ton

塔身 Mast 2m×2m 反力 Reactions

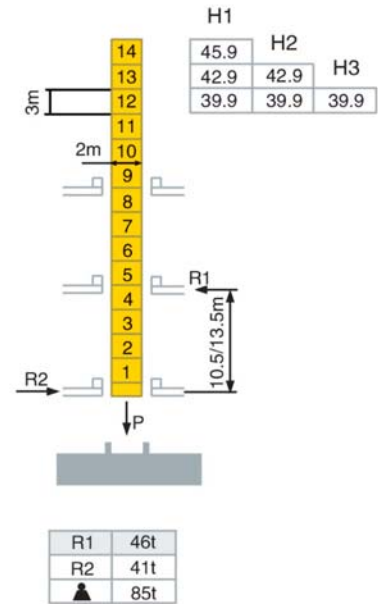
固定式 Stationary



行走式 Travelling



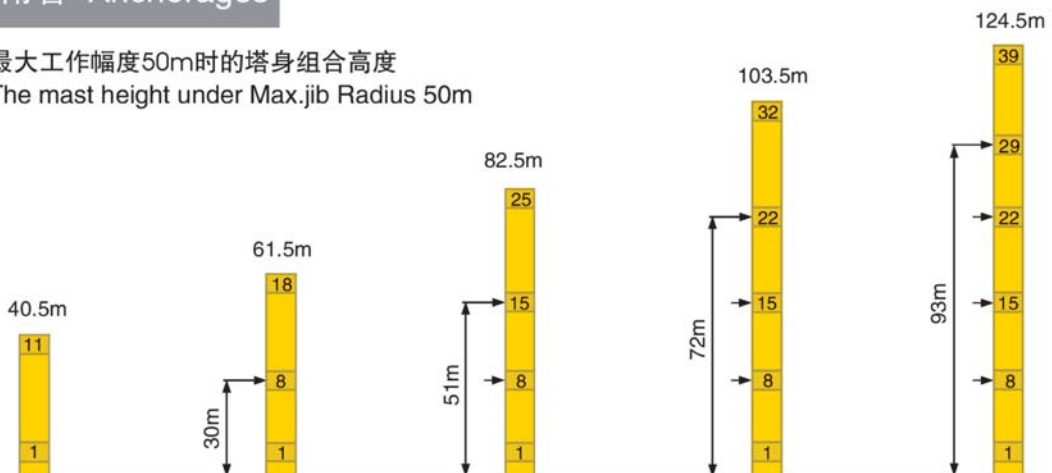
内爬式 Internal Climbing



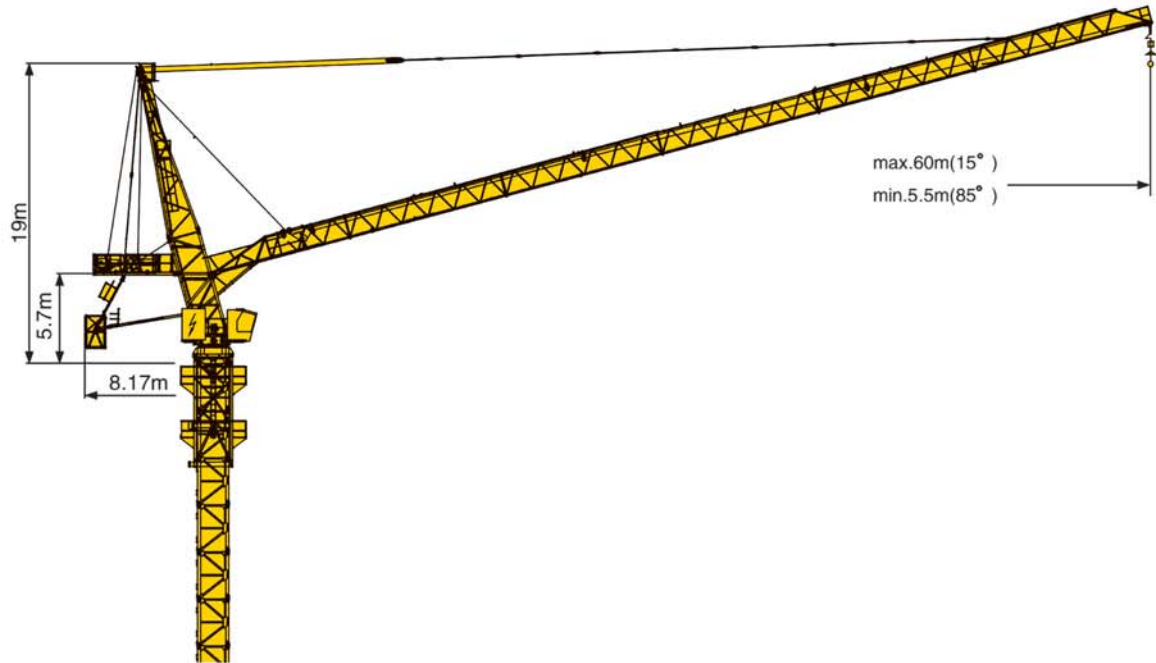
臂jib H1、H2、H3分别代表幅度为30~35m,40~45m,50m时臂根铰点高度
 H1、H2、H3 is relatively for the height under hinge with a jib radius of 30~35m,40~45m,50m
 ● :工作状态 In service
 ■ :非工作状态 Out of service
 人 :无吊载、无配重、最长起重臂和最大高度时的自重
 Without load and ballast with longest jib and maximal height

附着 Anchorages

最大工作幅度50m时的塔身组合高度
 The mast height under Max.jib Radius 50m



Luffing Tower crane TCD260-Max Load 16ton



机构特性 Mechanism						Drum Capacity	Motor
	m/min	32	64	16	32	600m >600m*	75Kw
	t	8.00	4.00	16.0	8.00		
	1 min 40 S						55Kw
	r/min	0.7				2X9Kw	
	m/min	12.5/25				4X1.7/3.4Kw	
Mains	380V(± 10%) 50Hz 180Kw						

载荷特性表 Load Diagram

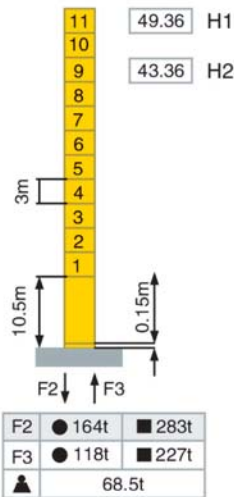
Jib m	倍率 Fall	R(Cmax) m	C(max) t	15	20	25	30	35	40	45	50	55	60
60	IV	-	-	-	-	-	-	-	-	-	-	-	-
	II	22.8	8.00	8.00	8.00	7.33	6.15	5.21	4.52	3.98	3.55	3.21	2.90
50	IV	15.7	16.00	16.00	13.75	10.66	8.60	7.12	6.02	5.28	4.70		
	II	31.2	8.00	8.00	8.00	8.00	8.00	7.14	6.22	5.48	4.90		
40	IV	17.3	16.00	16.00	13.98	11.27	9.05	7.92	6.70				
	II	34.5	8.00	8.00	8.00	8.00	8.00	7.89	6.90				
30	IV	18.1	16.00	16.00	14.20	11.88	9.50						
	II	30.0	8.00	8.00	8.00	8.00	8.00						



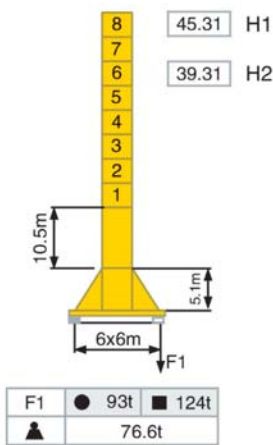
Luffing Tower crane TCD260-Max Load 16ton

塔身 Mast 2m×2m 反力 Reactions

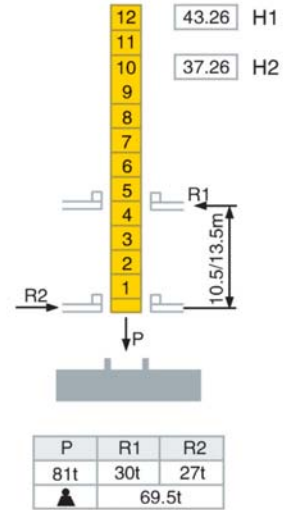
固定式 Stationary



行走式 Travelling



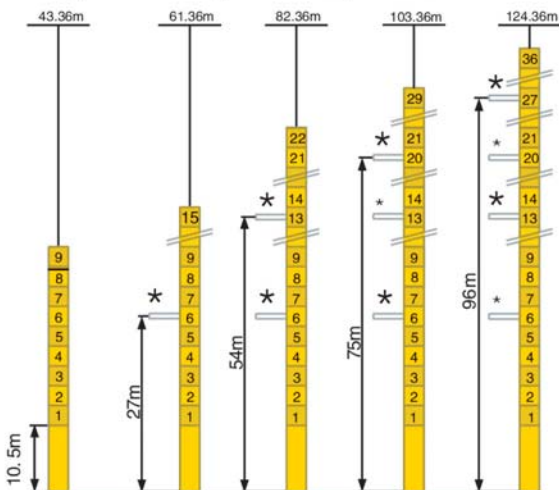
内爬式 Internal Climbing



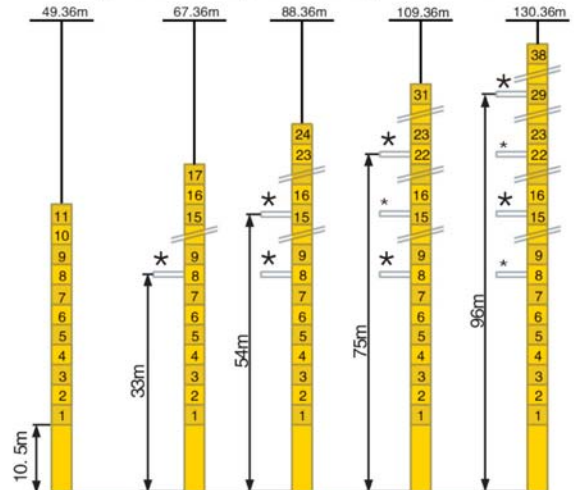
注：1) H1代表臂架幅度为30-40m时的塔身组合中臂根铰点处所能达到的最大高度
 Remarks: H1 represents for the Max. height under hinge with 30-40m's jib radius
 H2代表臂架幅度为50-60m时的塔身组合中臂根铰点处所能达到的最大高度
 H2 represents for the Max. height under hinge with 50-60m's jib radius
 2) ● 工作状态 In service
 3) ■ 非工作状态 Out of service
 4) ▲ 无吊载、无配重、最长起重臂和最大高度时的自重
 Without load and ballast with longest jib and maximal height

附着 Anchorages

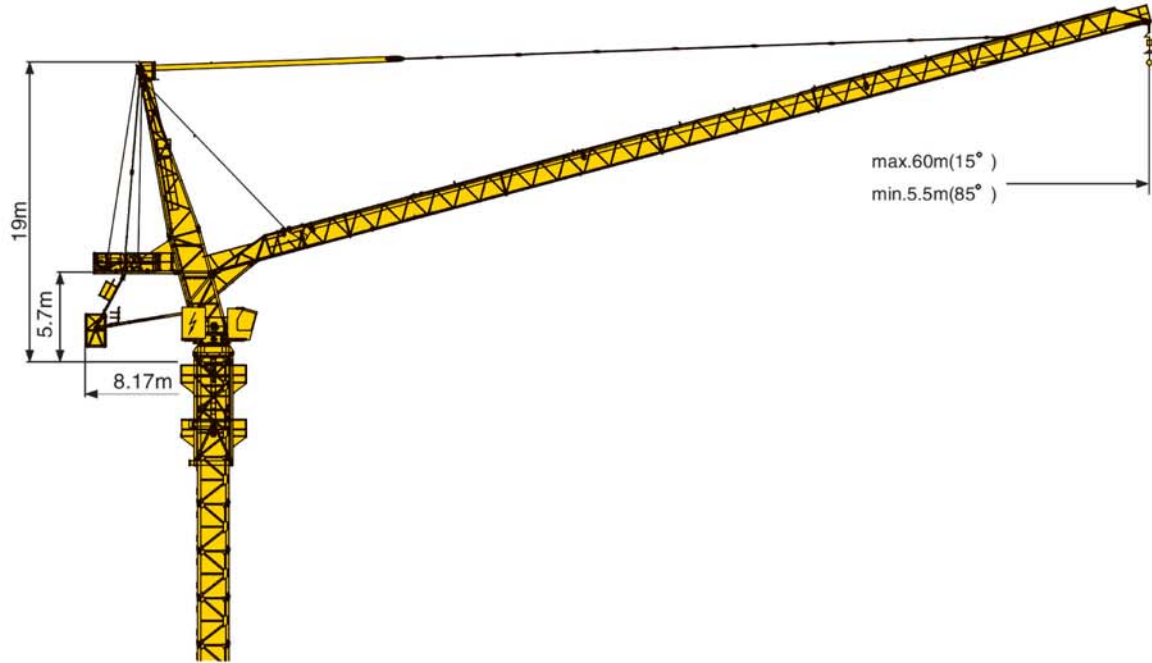
最大工作幅度50-60m时的臂根铰点高度
 Height under hinge with Max.jib radius 50-60m



最大工作幅度30-40m时的臂根铰点高度
 Height under hinge with Max.jib radius 30-40m



Luffing Tower crane TCD300-Max Load 16ton



机构特性 Mechanism						Drum Capacity	Motor
	m/min	30	60	15	30	600m >600m*	90Kw
	t	8.00	4.00	16.0	8.00		
	1 min 40 S						55Kw
	r/min	0-0.7				2X9Kw	
	m/min	12.5/25				4X1.7/3.4Kw	
Mains	380V(± 10%) 50Hz 180Kw						

载荷特性表 Load Diagram

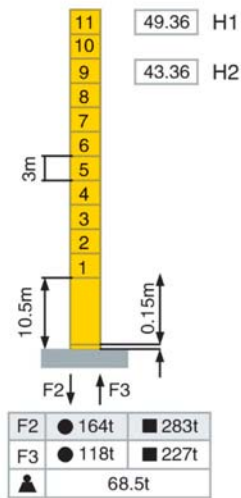
Jib m	倍率 Fall	R(Cmax) m	C(max) t	15	20	25	30	35	40	45	50	55	60
60	IV	-	-	-	-	-	-	-	-	-	-	-	-
	II	29.1	8.00	8.00	8.00	8.00	7.75	6.58	5.72	5.05	4.51	4.08	3.70
50	IV	18.7	16.0	16.0	14.87	11.78	9.72	8.24	7.14	6.28	5.60		
	II	36.9	8.00	8.00	8.00	8.00	8.00	8.00	7.34	6.48	5.80		
40	IV	20.7	16.0	16.0	16.0	13.15	10.86	9.22	8.00				
	II	40.0	8.00	8.00	8.00	8.00	8.00	8.00	8.00				
30	IV	21.5	16.0	16.0	16.00	13.68	11.30						
	II	30.0	8.00	8.00	8.00	8.00	8.00						



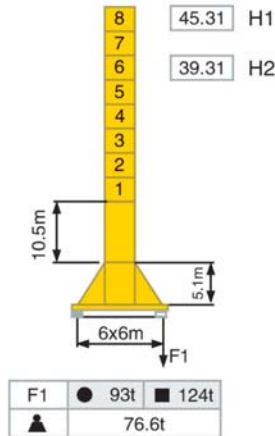
Luffing Tower crane TCD300-Max Load 16ton

塔身 Mast 2m×2m 反力 Reactions

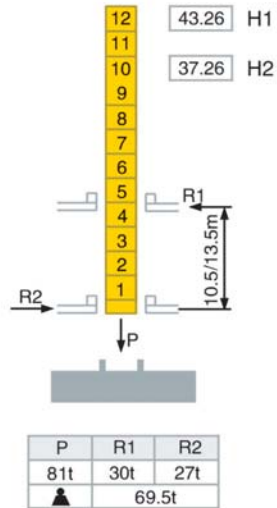
固定式 Stationary



行走式 Travelling



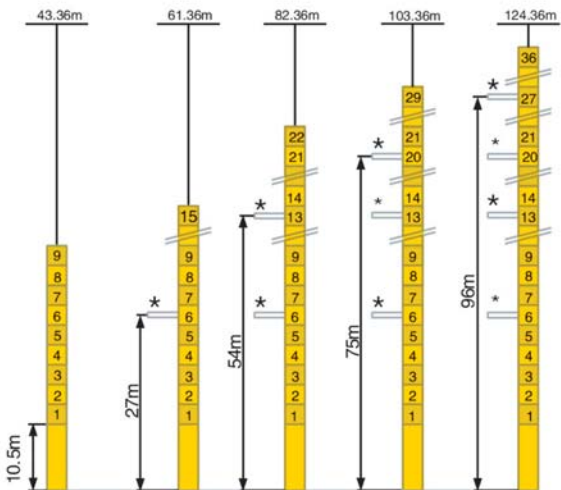
内爬式 Internal Climbing



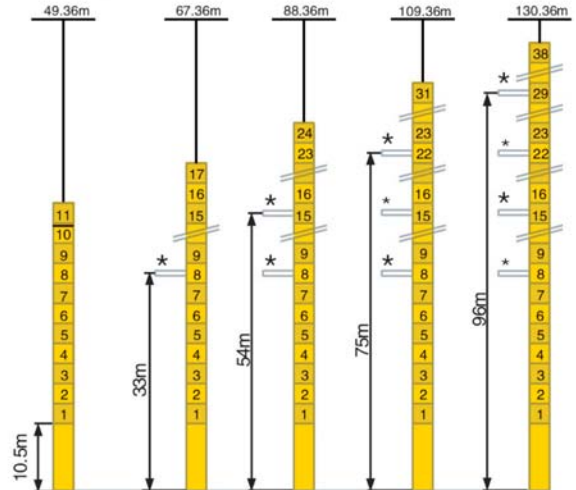
注：1) H1代表臂架幅度为30-40m时的塔身组合中臂根铰点处所能达到的最大高度
 Remarks: H1 represents for the Max. height under hinge with 30-40m's jib radius
 H2代表臂架幅度为50-60m时的塔身组合中臂根铰点处所能达到的最大高度
 H2 represents for the Max. height under hinge with 50-60m's jib radius
 2) ● 工作状态 In service
 3) ■ 非工作状态 Out of service
 4) ▲ 无吊载、无配重、最长起重臂和最大高度时的自重
 Without load and ballast with longest jib and maximal height

附着 Anchorages

最大工作幅度50-60m时的臂根铰点高度
 Height under hinge with Max.jib radius 50-60m



最大工作幅度30-40m时的臂根铰点高度
 Height under hinge with Max.jib radius 30-40m





Los Angeles, U.S.A.

Contact person: Ms. Lina
Mobile: 001-626 715 6060
Tel: 001-626-8106368
Fax: 001-626-8106853
E-mail: linazhang@icnbn.com

Dubai, U.A.E.

Contact person: Mr. Eric
Mobile: 00971 50 8606948
Tel: 00971 4 3746752
Fax: 00971 4 3746104
E-mail: ericfu@icnbn.com

Riyadh, Saudi Arabia

Contact person: Mr. Cosmo
Mobile: 00966-53-2595202
Tel: 00966 1 4611362
Fax: 00966 1 4611279
E-mail: cosmowang@icnbn.com

Tehran, Iran

Contact person: Mr. Salih
Mobile: 0098 912 5491885
Tel: 0098 21 44400427
Fax: 0098 21 44401884
E-mail: salihma@icnbn.com

Moscow, Russia

Contact person: Mr. Eddie
Mobile: 007 926 0196403
Tel: 007 495 3434330
Fax: 007 495 7480366
E-mail: eddiewu@icnbn.com

Topless Tower Crane

Luffing Tower Crane

CMA^X

CNBM INTERNATIONAL CORPORATION

Floor 17th, NO.4 Building, Zhuyu Business Center,
NO.9 Shouti South Road, Haidian District, Beijing 100048, China.

Tel: 010 6879 6346

Fax: 010 6879 6677

E-mail: cnbmmech@icnbn.com

Website: www.cmaxmachinery.com



CNBM CNBM International Corporation